

**DuoDrive with  
Energy Efficiency IE5+**  
Integrated Gear Unit & Motor



# DuoDrive – Integrated Geared Motor Concept

The new DuoDrive with integrated IE5+ synchronous motor brings a new era of energy efficiency and easy system maintenance.

- ▶ Extremely high system efficiency of up to 92%
- ▶ Reduced Total Cost of Ownership (TCO) and fast Return on Investment (ROI)
- ▶ Variant reduction through constant motor torque over a wide speed range
- ▶ Compact design for easy installation and space utilization
- ▶ Hygienic, smooth body for wash-down environments
- ▶ Industry-standard mounting dimensions
- ▶ Quiet operation

## Features

- ▶ Latest generation permanent magnet synchronous motor (PMSM) integrated into a single-stage helical gear unit housing
- ▶ Power range from 0.5 to 4 hp in a single frame size
- ▶ Flexible attachment options:
  - ▶ B5 flange (diameter 160 mm)
  - ▶ B14 flange (diameter 160 or 200 mm)
  - ▶ Torque arm, shrink disc, and GRIPMAXX™
- ▶ Wide variety of motor connectivity options such as HANQ8/ HAN10E plug connectors, round connectors, or directly wired
- ▶ Optional holding brake or integrated encoder system

The perfect system solution combined with NORD drive electronics

- ▶ NORDAC *PRO* for control cabinet installations  
NODAC *LINK*, *FLEX*, and *ON+* for decentralized and wall mounting installations
- ▶ Suitable system wiring:
  - ▶ Motor connection
  - ▶ Mains supply
  - ▶ Signal connection
- ▶ Together with perfectly matched drive electronics, NORD DuoDrive is the perfect solution for high power requirements and outstanding system efficiency



## Variant Reduction

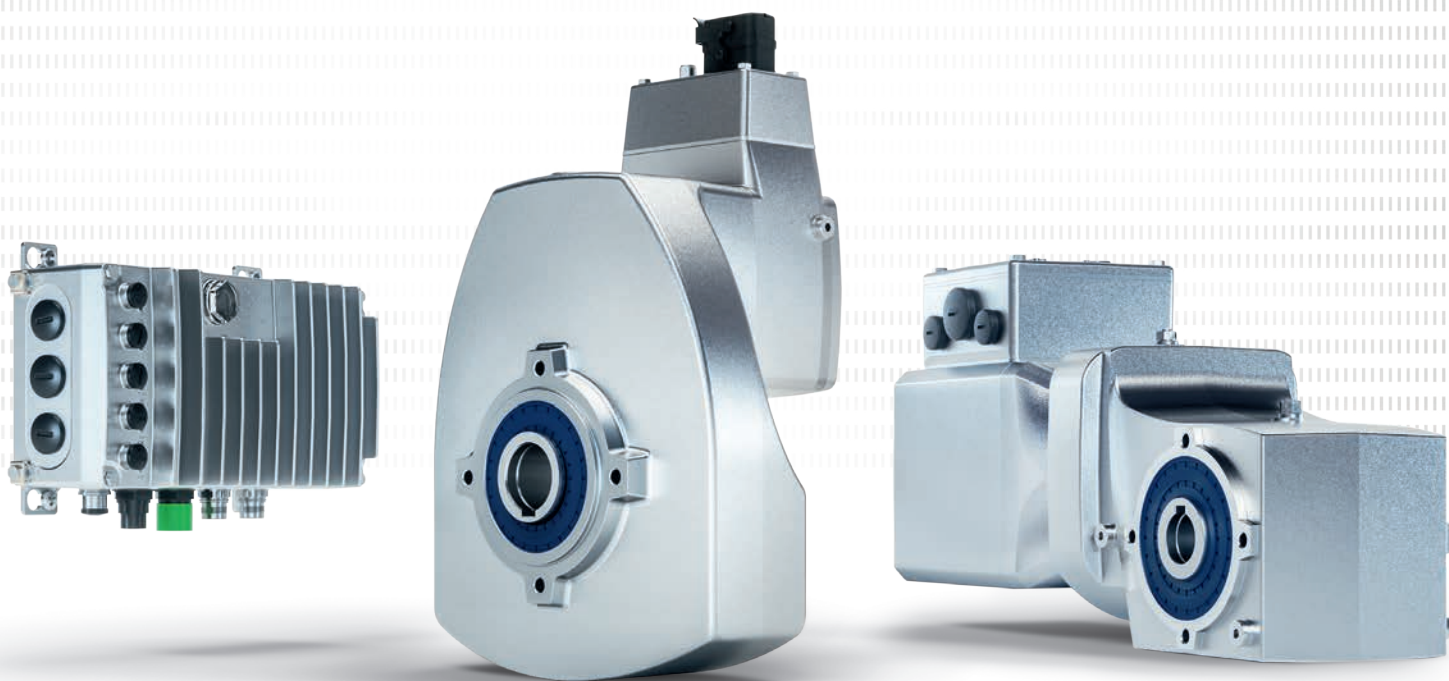
By reducing the number of variants, it is possible to minimize administrative expenses and set up leaner manufacturing, logistics, storage, and service processes. The new generation of IE5+ motors combines the benefits of NORD's modular system with the possibility of reducing system variants. This solution is tailored to each customer and features the following advantages:

- ▶ Motor can be operated worldwide
- ▶ High system overload capacity
- ▶ Large speed range at constant motor torque
- ▶ Explicitly tailored to the individual load range
- ▶ Minimal space requirements paired with high power density
- ▶ Reduced spare part inventory



# INNOVATIVE, EFFICIENT SOLUTIONS FOR ALL-AROUND COMPATIBILITY.

Innovative, Compatible, Future-Ready:  
DuoDrive, IE5+, and NORDAC *ON/ON+*.



For more information:



S9012 –  
IE5+ motor



TI 60-0001

## US

Central Region  
Corporate Headquarters  
800 NORD Drive  
Waunakee, WI 53597  
Tel. 888.314.6673  
info.us@nord.com  
www.nord.com

East Region  
300E Forsyth Hall Dr.  
Charlotte, NC 28273  
Tel. 888.314.6673  
info.us@nord.com

West Region  
1180 Railroad St.  
Corona, CA 92882  
Tel. 888.314.6673  
info.us@nord.com

South Region  
350 Cypress Hill Dr, Suite 400  
McKinney, TX 75071  
Tel. 888.314.6673  
info.us@nord.com

## CA

NORD Gear Limited  
Brampton, ON  
41 West Drive  
Brampton, ON L6T4A1  
Tel. 800.668.4378  
info.ca@nord.com

## MX

NORD DRIVE SYSTEMS SA DE CV  
Queretaro, Mexico  
Av. Industria Textil B.6  
Parque Industrial PYME, Huimilpan  
QRO - Mexico 76950  
Tel. 52 442 688 7110  
info.mx@nord.com